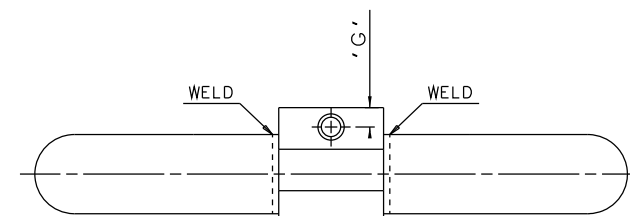
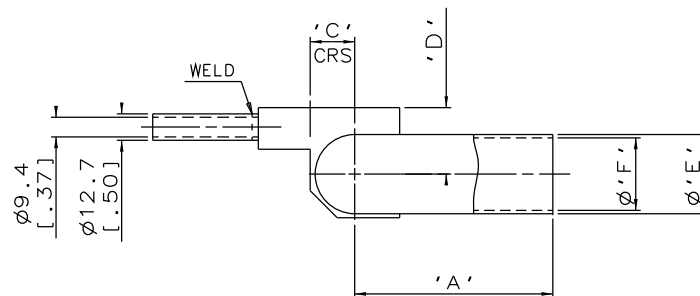
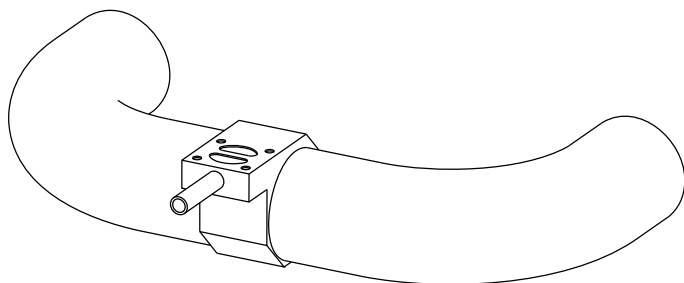


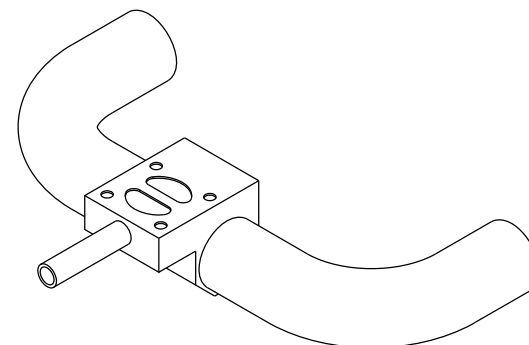
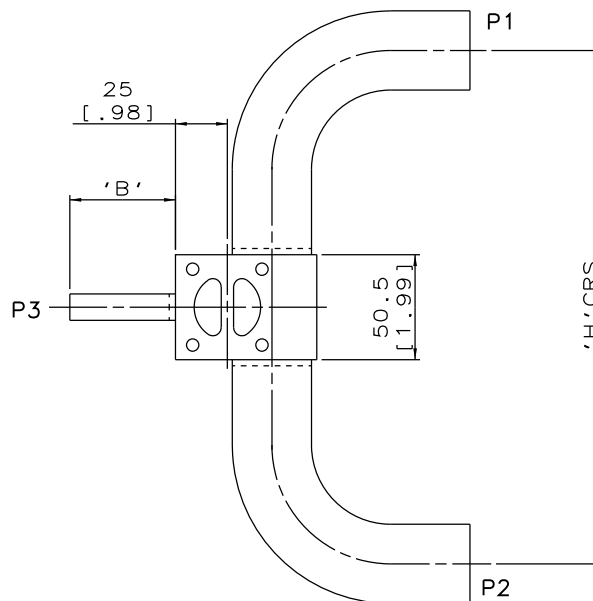
DN15/0.50
MAINLINE ONLY



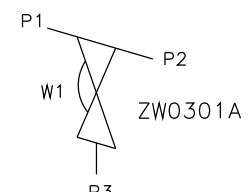
DN20/0.75 TO DN65/2.50
MAINLINE ONLY



DN80/3.00 TO DN100/4.00
MAINLINE ONLY



MAINLINE SIZE		A		B		C		D		øE		øF		G		H		BODY WEIGHT
mm	inch	mm	inch	mm	inch	mm	inch	mm	inch	mm	inch	mm	inch	mm	inch	mm	inch	Kgs
DN15	0.50	76.2	3.00	50.8	2.00	8.0	0.31	16.0	0.63	12.7	0.50	9.4	0.37	9.4	0.37	208.9	8.22	0.6
DN20	0.75	76.2	3.00	50.8	2.00	10.9	0.43	22.0	0.87	19.05	0.75	15.75	0.62	9.4	0.37	208.9	8.22	0.7
DN25	1.00	76.2	3.00	50.8	2.00	14.4	0.57	26.0	1.02	25.4	1.00	22.1	0.87	9.4	0.37	208.9	8.22	0.9
DN40	1.50	95.3	3.75	50.8	2.00	21.4	0.84	32.0	1.26	38.1	1.50	34.8	1.37	9.4	0.37	247.1	9.73	1.1
DN50	2.00	120.7	4.75	50.8	2.00	27.2	1.07	37.2	1.46	50.8	2.00	47.5	1.87	9.4	0.37	297.9	11.73	1.7
DN65	2.50	139.8	5.50	50.8	2.00	33.6	1.32	40.5	1.60	63.5	2.50	60.2	2.37	9.4	0.37	336.1	13.23	2.2
DN80	3.00	158.8	6.25	50.8	2.00	40.5	1.59	45.0	1.77	76.2	3.00	72.9	2.87	9.4	0.37	388.1	15.28	2.5
DN100	4.00	203.2	8.00	50.8	2.00	52.0	2.05	53.8	2.12	101.6	4.00	97.38	3.83	9.4	0.37	476.9	18.78	4.8



ORIENTATION AS
PER P&ID DIAGRAM
FOR OPTIMUM
DRAINABILITY.

The information on this sheet is Private and Confidential and is the property of Crane Process Flow Technologies Limited and must not be published directly or indirectly in any manner whatsoever without the written permission of the Company and must not be used in any way detrimental to their interests.
© Crane Process Flow Technologies

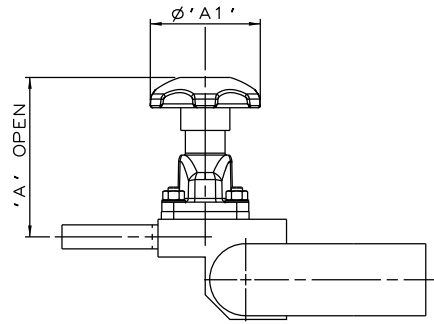
CRANE Process Flow Technologies
A Crane Co. Company

Saunders
The Science Inside

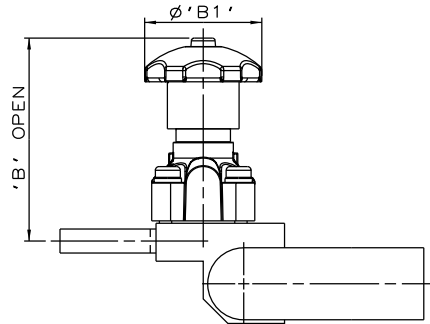
Title
SCHEDULE OF LEADING DIMENSIONS FOR DN15/0.50 WEIR POINT OF USE 'T' BODY WITH BUTT WELD OD TUBE ENDS

Drawn R1 Date 29.09.11 UNCONTROLLED IN
Checked RND Date 08.03.12 HARD COPY FORMAT

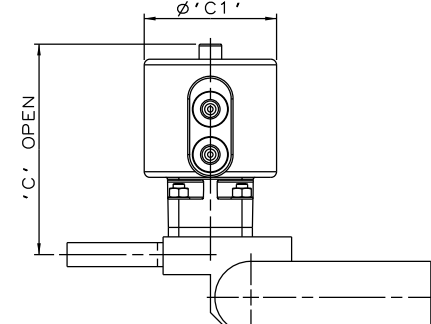
First Angle Projection Method E DO NOT SCALE Drawing No. WEB-033 Issue. 2



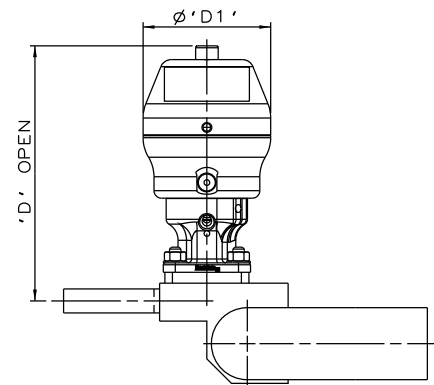
SS NON SEALED
BONNET ASSEMBLY



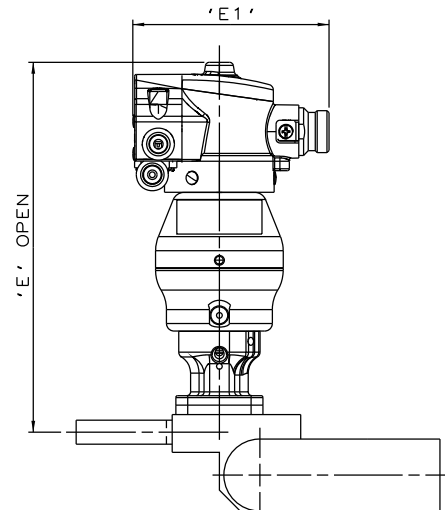
PES BONNET
ASSEMBLY



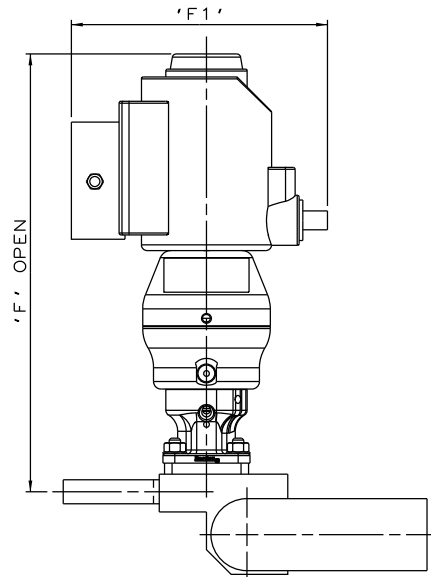
EC ACTUATOR
(ALL MODES)



*S360 ACTUATOR



*S360 ACTUATOR
WITH M-VUE SENSOR



*S360 ACTUATOR
WITH I-VUE SENSOR

The information on this sheet is Private and Confidential and is the property of Crane Process Flow Technologies Limited and must not be published directly or indirectly in any manner whatsoever without the written permission of the Company and must not be used in any way detrimental to their interests.
© Crane Process Flow Technologies

CRANE Process Flow Technologies
A Crane Co. Company

Saunders
The Science Inside

Title
SCHEDULE OF LEADING DIMENSIONS FOR DN15/0.50 WEIR
'T' BODY (DN15/0.50 BRANCH) WITH BUTT WELD OD TUBE ENDS,
FITTED WITH TOPWORKS OPTIONS

Drawn RI Date 28.06.16 UNCONTROLLED IN
Checked RND Date 28.06.16 HARD COPY FORMAT

First Angle Projection Method E DO NOT SCALE Drawing No. WEB-033-ASSY Issue. 1

* DIMENSIONS SHOW MAXIMUM ENVELOPE FOR ALL MODES

BRANCH SIZE		A		A1		B		B1		C		C1		D		D1		E		E1		F		F1	
mm	inch	mm	inch	mm	inch	mm	inch	mm	inch	mm	inch	mm	inch	mm	inch	mm	inch	mm	inch	mm	inch	mm	inch	mm	inch
DN15	0.50	84.4	3.32	62.0	2.44	107.4	4.23	62.0	2.44	111.4	4.39	70.0	2.75	135.4	5.33	67.5	2.66	195.7	7.70	103.8	4.09	231.4	9.11	136.0	5.35